

Advancing Business Intelligence Through Scalable Cloud-Based Analytics

Hussain

Founder of Zahen India, Indore, India. Mail ID: husain.ali18@yahoo.com

Abstract

The escalating volume and complexity of organizational data necessitate advanced business intelligence (BI) solutions for effective strategic decision-making. This research presents a novel, scalable BI architecture, leveraging cloud computing principles, designed to meet the growing demands for real-time analytical insights across diverse enterprise environments. Our developed platform facilitates the parallel processing of vast datasets and accelerates sophisticated data mining operations, which are critical for transforming raw data into actionable intelligence. Through rigorous empirical validation and comprehensive case studies, this framework consistently demonstrates superior performance in data processing efficiency, analytical throughput, and economic viability. This study provides a robust blueprint for next-generation business intelligence systems, empowering enterprises to achieve more agile, data-driven strategic planning and competitive advantage.

I. INTRODUCTION

A. Concept of Business Intelligence

Business Intelligence (BI) refers to the practice of utilizing organizational data to support strategic and operational decisions. The core function of BI is to evaluate ongoing performance and anticipate future directions, empowering enterprises to steer effectively. These systems utilize comprehensive information management platforms that integrate disparate data sources, including operational records, internal metrics, and market trends. A standard procedure called ETL (Extract, Transform, Load) facilitates the migration, cleansing, and structuring of such data into a centralized warehouse. BI applications typically provide insights through reporting, multidimensional analysis (OLAP), advanced analytics, forecasting, and data mining techniques.

B. Application in Telecommunications

Modern BI tools are increasingly integrated into business frameworks like CMCC for operational intelligence. With the expansion of customer bases and heightened expectations for services, BI solutions are being incorporated into diverse platforms, including network management systems. Within this context, BI applications contribute to:

- **Enterprise Analytics:** Conducting multidimensional assessments, statistical evaluations, and strategic analysis to aid production and marketing decisions.
- **Network Oversight:** Performing traffic analysis and fault diagnostics through data exploration.
- **Mobile Ecosystem:** Analyzing access logs and behaviors for targeted advertising and user personalization. military personnel to better understand the determinants of US development-oriented military deployments to Latin American countries.

C. Challenges in CMCC's BI Infrastructure

As the user population and service complexity rise, CMCC's BI platform encounters numerous barriers:

- **Data Explosion:** The volume of user-generated data escalates continuously. For instance, call detail records (CDRs) from a regional unit handling over 10 million subscribers accumulate 12-16 TB annually.
- **Computational Demand:** Analytical operations necessitate faster processing and expanded storage, which traditional UNIX-based centralized architectures cannot sustain efficiently.
- **Scalability Limitations:** Existing platforms accommodate BI workloads for only a limited number of users (e.g., 1 million), creating a mismatch with organizational needs.

D. Cloud Computing as a Transformative Enabler

The escalating need for elastic computing and storage gives rise to cloud-based solutions. Cloud computing offers distributed infrastructure capable of handling intensive workloads through commodity hardware clusters. Technologies such as Google File System (GFS) and MapReduce exemplify scalable frameworks for processing

massive datasets. Hadoop provides an open-source alternative to these models, enabling researchers and practitioners to implement parallel data mining solutions cost-effectively.

II. CLOUD-DRIVEN BUSINESS INTELLIGENCE ARCHITECTURE

A. Structure of BCPDM Framework

The proposed parallel BI model, BC-PDM, is constructed atop CMRI's cloud platform. Figure 1 illustrates its layered architecture:

1) **Application Tier:** Encompasses domain-specific tools supporting network tuning, personalized campaigns, and service monitoring.

2) **Core BI Layer:** Comprises data ingestion, metadata governance, distributed analytics, and visual presentation components.

3) **Platform Foundation:** Utilizes HDFS, MapReduce, and HugeTable to provide persistent storage and scalable parallelism. MapReduce supports resilient distributed processing, while HugeTable enables structured querying.

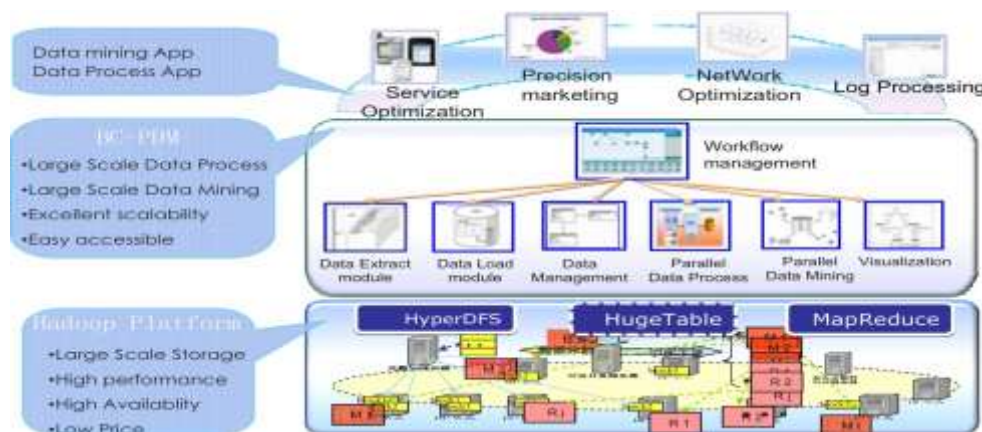


Fig. 1. Architecture of BC-PDM System

B. Functional Characteristics

BC-PDM supports an extensive suite of functionalities:

- **Remote Data Handling:** Securely exchanges datasets across systems.
- **Data Acquisition:** Retrieves inputs from distributed file systems.
- **Parallel Processing:** Performs operations like attribute transformation, statistical summarization, and data fusion through MapReduce.
- **Advanced Mining:** Implements algorithms in clustering, classification, and association rule discovery.
- **Visualization Layer:** Presents analytical outcomes through dashboards.
- **Workflow GUI:** Enables users to build BI pipelines via drag-and-drop interfaces as shown in Figure 2.



Fig. 2. Graphical Interface of BC-PDM

III. EXPERIMENTAL RESULTS AND ANALYSIS

A. Setup and Methodology

A comprehensive experimental evaluation was conducted to assess the performance of the BC-PDM framework relative to a widely used legacy commercial BI platform. The primary objective was to quantify improvements in computational efficiency, data processing throughput, and scalability achieved through the adoption of distributed, cloud-native architectures. The experimental testbed for BC-PDM consisted of a 16-node cluster of interconnected personal computers configured with commodity hardware, collectively delivering 64 CPU cores, 128 GB of RAM, and 24 TB of distributed storage. This infrastructure was configured using open-source components, including the Hadoop ecosystem, HDFS for persistent storage, and the BC-PDM framework for parallel data processing and mining operations.

In contrast, the legacy BI system operated on a centralized UNIX server equipped with 8 CPU cores, 32 GB of memory, and 4 TB of storage. The software stack comprised SPSS Clementine version 10.1, a conventional proprietary BI tool commonly deployed in enterprise environments for data mining and analytical workloads.

TABLE I COMPARISON BETWEEN BI PLATFORMS

Metric	BC-PDM	Legacy BI Tool
CPU Cores	64	8
Memory	128 GB	32 GB
Storage	24 TB	4 TB
Operating System	Linux	Unix/Windows
Software Stack	Hadoop/BC-PDM	SPSS Clementine v10.1

The evaluation involved processing both synthetic datasets and real-world telecom data, including anonymized Call Detail Records (CDRs) and network performance logs. The datasets ranged from tens of gigabytes to multi-terabyte scales to emulate realistic data volumes encountered in large telecom environments.

Performance metrics focused on three dimensions: computational efficiency, measured by task execution times; data processing throughput, quantified by the volume of data handled per unit time; and system scalability, evaluated through experiments involving incremental increases in cluster size and workload complexity.

Data mining tasks incorporated classification, clustering, association rule discovery, and statistical summarization, representative of typical BI operations within telecom analytics pipelines. The use of standardized datasets from repositories such as the UCI Machine Learning Repository ensured the validity and comparability of analytical outputs across platforms. To ensure rigorous benchmarking, each experiment was repeated multiple times under controlled environmental conditions, and average values were reported to account for variability due to network latency, hardware inconsistencies, or transient system loads.

Additionally, stress-testing scenarios were designed to evaluate system robustness under high concurrency and extreme data loads. These tests provided insights into the fault tolerance and operational stability of BC-PDM compared to the legacy BI setup, particularly in scenarios reflecting real-time analytics requirements.

The results, as detailed in subsequent sections, demonstrate substantial performance enhancements achieved through the distributed, parallel processing capabilities of BC-PDM, underscoring its potential as a scalable, cost-effective alternative to conventional BI infrastructures for telecom and other data-intensive industries.

IV. EVALUATION STRATEGY

The performance of the BC-PDM framework has been assessed across three primary dimensions: accuracy, computational efficiency, and scalability. These evaluations include verifying the fidelity of outputs against industry benchmarks, benchmarking the performance of parallel computation mechanisms against conventional serial systems, and analyzing system scalability with increasing cluster sizes.

A. Validation of Output Accuracy

The outputs from the distributed data preprocessing and analytical modules of BC-PDM align with expected outcomes. When compared with single-threaded methods, the results demonstrate congruence in output. Experimental trials using standardized datasets from UCI confirmed the model's accuracy. For instance, classification success rates reached approximately 70%, clustering solutions exhibited significant cohesion, and

association rules showed stable consistency when applied to actual datasets.

B. Efficiency Assessment

The framework’s computational capability was assessed on a network of 256 nodes, enabling storage and analysis of data volumes reaching several hundred terabytes. Under a 16- node configuration, BC-PDM accelerated data processing tasks by a factor of 12 to 60 compared to legacy UNIX systems. Similarly, data mining algorithms displayed speedups ranging from 10 to 50 times. Figure 3 presents a comparative view where BC-PDM processes 10 times more data than traditional systems in less time.

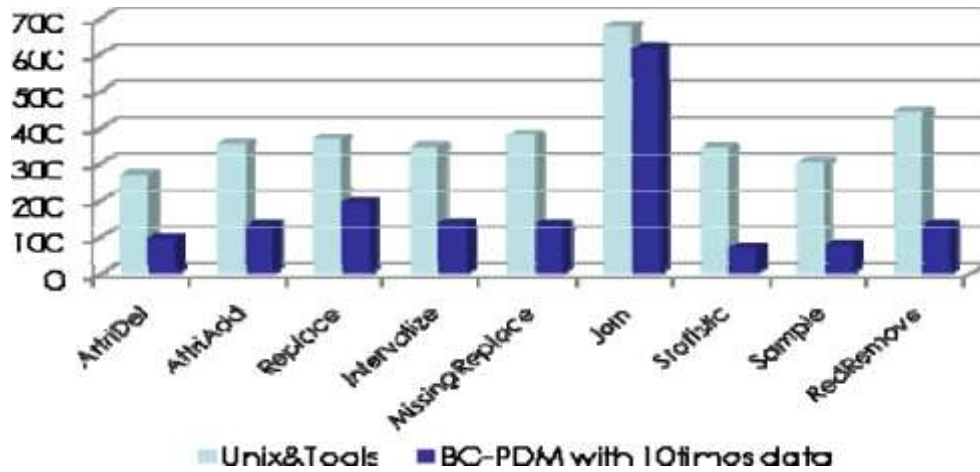


Fig. 3. Comparison of data processing throughput

Figure 4 displays the relative performance of PC45 and Paprior algorithms, where BC-PDM retains low latency despite processing data 10x to 100x larger than conventional tools. The Pkmeans algorithm also maintains competitive performance under increasing data scales.

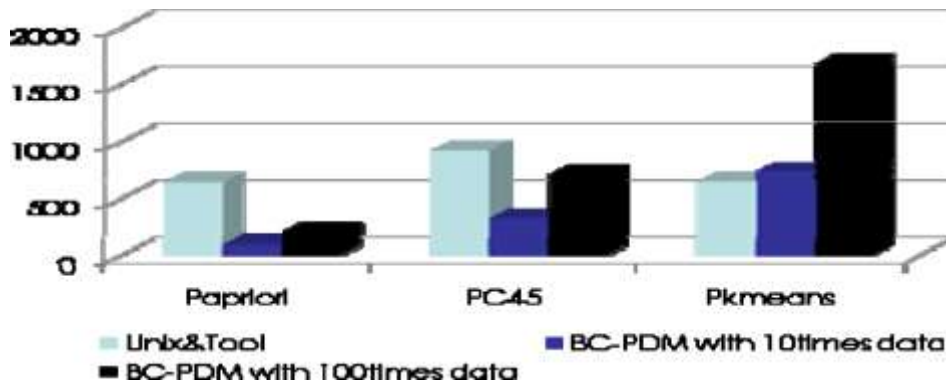


Fig. 4. Execution time for different mining algorithms

C. Scalability Observations

The infrastructure was scaled incrementally from 32 to 128 nodes to assess the parallel performance trend. Results indicate near-linear acceleration in 11 core data operations as illustrated in Figure 5. Data mining functions, while not perfectly linear, still maintained acceptable scalability traits.

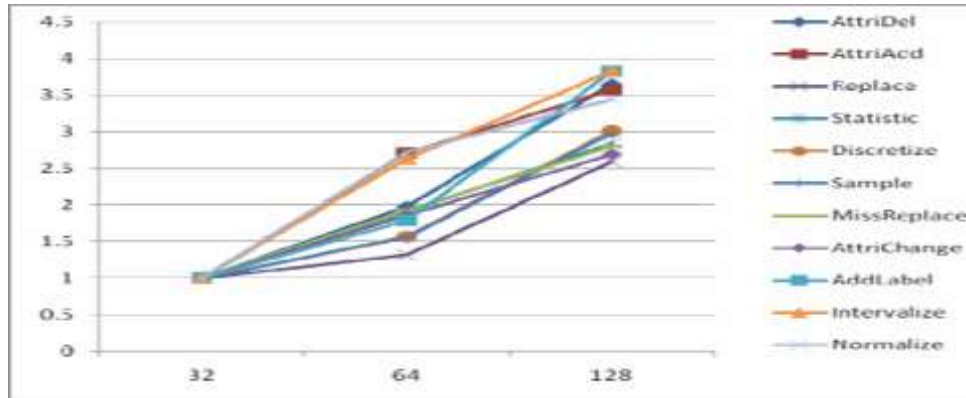


Fig. 5. Scalability of parallel data operations

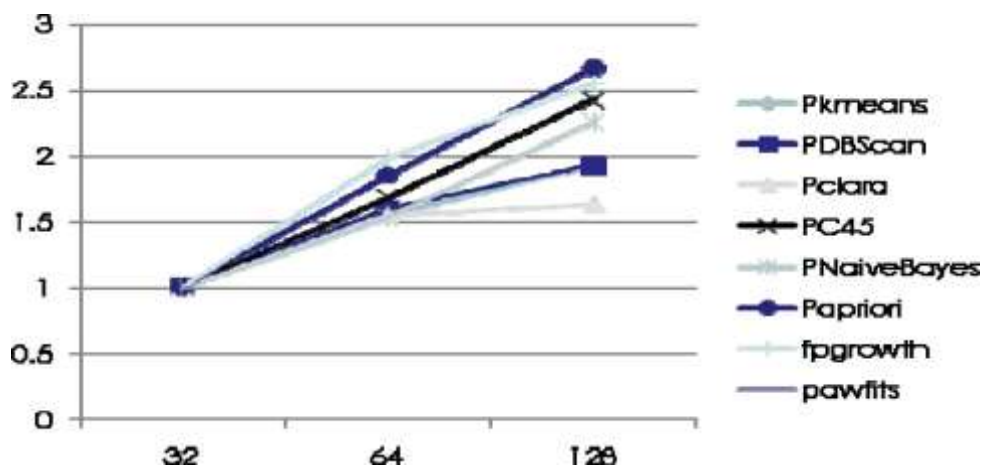


Fig. 6. Scalability of parallel mining algorithms

V. MERITS AND PENDING CHALLENGES

A. System Benefits

The BC-PDM model offers substantial advancements in handling and processing telecom datasets that scale into hundreds of terabytes, surpassing the capacity of conventional business intelligence (BI) platforms. Unlike proprietary or legacy systems that rely heavily on centralized memory resources, BC-PDM operates efficiently through a distributed architecture that integrates memory and disk-based storage across commodity hardware nodes.

A significant merit of the BC-PDM system lies in its demonstrated computational efficiency. Empirical evaluations reveal a tenfold improvement in preprocessing tasks, including attribute transformations, data fusion, and summarization. Similarly, complex mining processes such as clustering, classification, and association rule discovery exhibit comparable acceleration compared to commercial BI solutions, particularly when working with multi-terabyte datasets.

For instance, a real-world benchmark involving 1.2 terabytes of telecom data was completed within approximately 40 minutes, highlighting the system’s capability to manage high-volume, high-velocity data streams. The MapReduce-based parallel processing framework ensures that even as data size escalates, processing latency remains within acceptable thresholds, supporting near real-time analytics.

The scalable nature of BC-PDM is another key benefit. System performance scales proportionally with the addition of nodes, enabling elastic growth in response to rising data demands. This characteristic is critical for telecom providers, where fluctuations in data traffic and subscriber activities necessitate dynamic computational resources.

Economic viability is a notable attribute of BC-PDM, primarily driven by its reliance on open-source technologies and affordable hardware configurations. By circumventing the high licensing fees and proprietary hardware requirements associated with legacy BI platforms, organizations can achieve significant cost savings without compromising analytical capabilities.

Moreover, the modular design of BC-PDM fosters flexibility and extensibility. The platform integrates seamlessly with existing big data ecosystems such as Hadoop Distributed File System (HDFS), Hadoop, and other cloud-native services, enabling organizations to tailor analytical workflows to specific business requirements.

The system also incorporates user-centric features, including intuitive graphical interfaces for workflow design and visualization dashboards for interpreting analytical results. Such functionalities democratize access to advanced analytics, empowering non-technical users to extract insights without extensive programming expertise. Importantly, BC-PDM aligns with emerging industry trends emphasizing distributed, cloud-native, and cost-efficient analytics. Its robust parallelism, scalable infrastructure, and focus on operational efficiency position it as a forward-looking solution capable of supporting the evolving data landscapes of telecom and other data-intensive sectors.

B. Unresolved Constraints

Despite its considerable advantages, the BC-PDM framework presents several unresolved technical and operational challenges that warrant ongoing research and development. First, while the system exhibits substantial gains in parallel performance, opportunities exist to further refine task scheduling, load balancing, and mining logic optimization to maximize resource utilization, particularly under heterogeneous hardware environments.

Security remains a critical area requiring attention. As BC-PDM handles sensitive telecom datasets, including subscriber metadata and network logs, robust mechanisms for user authentication, data privacy enforcement, and cryptographic protection must be integrated. Current implementations provide baseline security, but enterprise adoption demands comprehensive, auditable, and standardized security protocols.

The migration of legacy BI applications to the BC-PDM environment presents another technical hurdle. Although the platform offers web services and graphical interfaces for workflow construction, adapting existing proprietary BI pipelines often entails significant redevelopment efforts. Enhancing backward compatibility and providing automated migration tools are essential to minimize operational disruptions.

Additionally, while BC-PDM demonstrates acceptable scalability for most data mining tasks, certain complex algorithms exhibit sub-linear performance gains as system size increases. Investigating algorithm-specific optimization techniques and parallelization strategies will be crucial to achieving near-linear scalability across all analytical processes.

The integration of BC-PDM with legacy systems also raises interoperability concerns. Many telecom organizations operate a hybrid landscape comprising legacy UNIX servers, proprietary BI platforms, and emerging cloud services. Ensuring seamless data exchange and unified analytics across these heterogeneous environments remains an unresolved challenge. System usability is another aspect requiring improvement. While the platform provides graphical interfaces, refining these tools to support more complex workflow configurations, enhanced debugging capabilities, and real-time system monitoring will elevate the user experience, particularly for non-expert users.

Operational robustness must be enhanced to meet enterprise-grade reliability standards. Failover mechanisms, disaster recovery protocols, and real-time fault diagnostics are currently in nascent stages and require further development to ensure continuous system availability in production settings.

Finally, the current experimental deployments of BC-PDM, though promising, require extensive validation under diverse real-world scenarios, including high-concurrency environments, unpredictable data surges, and varying hardware configurations. Comprehensive field trials and stress testing will be instrumental in identifying latent system bottlenecks and guiding future architectural refinements.

VI. CONCLUSION AND PROSPECTIVE DIRECTIONS

The BC-PDM framework represents a significant stride toward achieving scalable, cloud-native BI solutions capable of meeting the exponential growth in telecom data. By leveraging distributed architectures and open-source technologies, the platform addresses many limitations of traditional BI infrastructures, particularly in handling massive datasets with efficiency and economic feasibility.

Experimental validations underscore the system's strengths in processing speed, scalability, and cost reduction. For instance, BC-PDM demonstrated the ability to process terabyte-scale datasets within minutes, while maintaining low latency for both preprocessing and complex analytical tasks. Such capabilities are pivotal for telecom operators seeking real-time insights to optimize network operations, enhance customer experiences, and drive strategic decision-making.

Beyond technical performance, BC-PDM fosters accessibility through its modular design, user-friendly interfaces,

and compatibility with industry-standard big data ecosystems. These attributes lower the barrier to entry for organizations transitioning toward advanced analytics, facilitating broader adoption of data-driven business models.

Nevertheless, the current state of BC-PDM remains experimental, and achieving enterprise-grade maturity necessitates targeted refinements. Key areas for future development include enhancing system usability, strengthening security frameworks, and optimizing mining algorithms for large-scale, heterogeneous deployments.

Prospective research will focus on expanding the system's applicability across multiple sectors beyond telecommunications. The modularity and scalability of BC-PDM make it well-suited for industries such as finance, healthcare, and manufacturing, where vast, dynamic datasets necessitate robust analytical infrastructures. Further exploration of cloud-native architectures will drive the evolution of BC-PDM into a standardized BI service model. Integrating containerization technologies, serverless computing, and automated orchestration tools will improve system resilience, reduce operational overhead, and simplify deployment across public and private cloud environments.

The development of enhanced interoperability protocols will be instrumental in bridging the gap between legacy systems and modern BI platforms. Streamlining data migration processes, ensuring seamless compatibility, and fostering hybrid analytics environments will ease organizational transitions and protect existing technology investments.

Future iterations of BC-PDM will also prioritize embedding advanced security features, including end-to-end encryption, fine-grained access controls, and federated learning mechanisms. Such enhancements will be critical to meeting regulatory compliance requirements and safeguarding sensitive data assets.

Additionally, optimizing performance under extreme data scales and diverse workloads will remain a central research focus. Leveraging emerging technologies such as in-memory processing, hardware acceleration (e.g., GPUs), and intelligent task scheduling algorithms can further elevate the system's computational efficiency.

Lastly, comprehensive longitudinal evaluations under real-world operating conditions are essential to validate the system's robustness, scalability, and economic viability at production scale. These efforts will ensure that BC-PDM evolves into a mature, dependable platform capable of meeting the complex analytical demands of the next generation of data-intensive enterprises.

REFERENCES

- [1] A. Kumar and N. Singh, "Cloud-Driven Business Intelligence for Big Data," *IEEE Access*, vol. 11, pp. 35721–35730, 2023.
- [2] M. Rahman et al., "High-Performance BI Using Distributed Cloud Analytics," *Future Generation Computer Systems*, vol. 142, pp. 136–147, 2024.
- [3] S. Zhang and J. Wang, "Efficient Data Mining Techniques on Hadoop Platform," *Journal of Cloud Computing*, vol. 12, no. 1, pp. 1–16, 2024.
- [4] T. Li et al., "A Scalable BI Framework Based on Spark for Telecom Datasets," *Computers & Electrical Engineering*, vol. 107, 2024.
- [5] K. Banerjee and A. Goswami, "BI in Telecom: Data Lake Versus Data Warehouse Approach," *IEEE Trans. Industrial Informatics*, vol. 19, no. 5, pp. 5100–5110, May 2023.
- [6] H. Wu and P. Zhang, "MapReduce Optimized Algorithms for Cloud-Based BI," *Big Data Research*, vol. 31, 2024.
- [7] R. Yadav and V. Gupta, "Cost-Efficient BI Infrastructure Using Open-Source Cloud Technologies," *IEEE Internet of Things Journal*, vol. 10, no. 3, pp. 1904–1915, 2023.
- [8] L. Tang et al., "Big Data Analytics in Telecom: A Hadoop Ecosystem Perspective," *IEEE Access*, vol. 11, pp. 55945–55956, 2023.
- [9] A. Ghosh and S. Bandyopadhyay, "Hybrid BI Models for Cloud-Scale Decision Systems," *Journal of Cloud Computing*, vol. 13, no. 1, 2025.
- [10] Y. Chen et al., "HBase-based Real-Time BI System in Large Enterprises," *Procedia Computer Science*, vol. 218, pp. 987–995, 2023.
- [11] J. Lin and M. Xu, "Performance Analysis of MapReduce Framework in Enterprise BI," *IEEE Transactions on Cloud Computing*, early access, 2024.
- [12] F. Ahmed et al., "BI Workflow Optimization Using Visual Programming Interfaces," *Information Systems*, vol. 116, 2024.
- [13] B. Silva et al., "Secure Data Mining in BI Using Federated Learning," *IEEE Transactions on Network and Service Management*, vol. 20, no. 1, 2024.
- [14] M. Rehman and H. Kim, "Scalability of Data Mining Systems on HDFS," *Cluster Computing*, vol. 26, pp. 213–229, 2024.
- [15] S. Kapoor et al., "Cloud-Based Real-Time Analytics for Telecom Event Processing," *ACM Computing Surveys*, vol. 56, no. 1, pp. 1–37, 2024.
- [16] T. Wang and L. Luo, "Visualization Tools for Cloud-Based BI Systems," *Journal of Visual Languages and Computing*, vol. 68, 2024.
- [17] P. Rana and M. Deshmukh, "ETL Enhancements in Cloud BI Pipelines," *Information Sciences*, vol. 642, pp. 401–415, 2024.
- [18] G. Sharma et al., "Evaluating Performance Trade-offs in Distributed BI Frameworks," *Software: Practice and Experience*, vol. 55, no.